

230<sub>VAC</sub>

# DU.350N

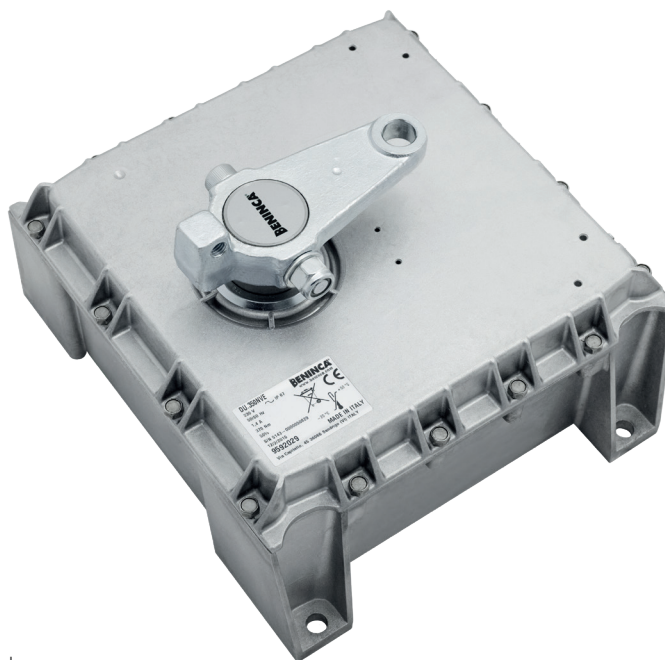
## UNDERGROUND INSTALLATION

oil submerged gear

**up to 4.0 m**

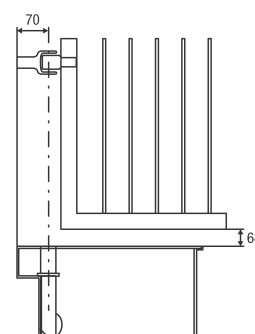
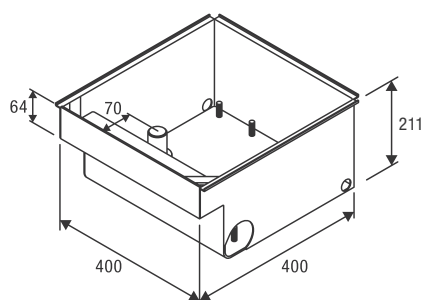
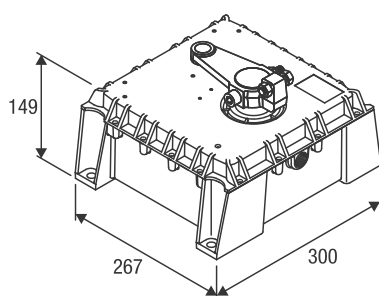
### CONTROL UNITS:

<b>DU.350N</b>	—	BRAINY HEADY
<b>DU.350NV</b>	—	BRAINY HEADY
<b>DU.350NVE</b>	—	BRAINY
<b>DU.350NVE-10</b>	—	BRAINY
<b>DU.350NGE</b>	—	BRAINY



## 230 Vac

- Irreversible electromechanical geared motor for gates of considerable sizes
- Adjustable mechanical stop included
- Available in the quick version (DU.350NV) for doors up to 3 m and in the version equipped with toothed wheel in cast iron (DU.350NGE)
- The versions with encoder (DU.350NVE and DU.350NGE) ensure crush prevention and precision in the gate moving phases
- A model equipped with 10 m cable is available to facilitate wiring operations and to prevent problems related to the oxidation of electrical contacts (DU.350NVE-10)

**Cams' disk not included**

**DU.350IX**

Self-supporting stainless steel foundation box max. opening 110°. Supplied with cover and cap, requires release accessory SB.DUxx.

**DU.350CF**

Self-supporting foundation box with cataphoretic painted finish, max. opening 110°. Supplied with grey painted cataphoresis cover (RAL9006) cap, requires release accessory SB.DUxx.

**DU.350CF-BL**

Self-supporting foundation box with cataphoretic painted finish, max. opening 110°. Supplied with black painted cataphoresis cover (RAL9005) and cap, requires release accessory SB.DUxx.

**SB.DU350.K**

Kit comprising personalised release key and components to connect the motor to the gate. Mechanical stop incorporated.

**SB.DU350.L**

Kit comprising release hex key and components to connect the motor to the gate. Mechanical stop incorporated.

**SB.DU350.L-UK**

Kit comprising release hex key and elements to connect the motor to the gate. Equipped with adjustable mechanical stop.

**SB.180.K**

Kit comprising personalised release key and components to connect the motor to the gate, for openings up to 180°.

**SB.180.L**

Kit comprising release hex key and components to connect the motor to the gate, for openings up to 180°.

**DU.350ST**

Adjustable mechanical open stop 80°/85°/90°/95°/100°/105°.

**DU.V96**

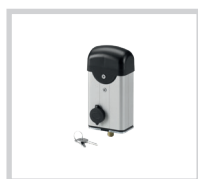
12 Vac/dc vertical electric lock, supplied with counterplate. Permits internal/external release.

**DU.V90**

12 Vac/dc horizontal electric lock, supplied with counterplate. Permits internal/external release.

**DU.9990**

Covering plate for DU.V90.

**E.LOCK**

230 Vac vertical electric lock, supplied with counterplate.

**E.LOCKSE**

Extended cylinder for E.LOCK electric lock. It allows unlocking gates up to 55mm-thick from the outside.

**DU.350FC**

Watertight limit switches with cam disk included.

**AUTOMATISMI BENINCÀ SpA** • Via del Capitello, 45 • 36066 Sandrigo (VI) ITALY • T +39 0444 751030 • sales@beninca.com

TECHNICAL DATA	DU.350N	DU.350NGE	DU.350NV	DU.350NVE
Motor supply	230 Vac (50-60Hz)	230 Vac (50-60Hz)	230 Vac (50-60Hz)	230 Vac (50-60Hz)
Max absorbed current	1.7 A	1.7 A	1.7 A	1.7 A
Torque	450 Nm	450 Nm	370 Nm	370 Nm
Opening time	22"	22"	16"	16"
Duty cycle	intensive use	intensive use	intensive use	intensive use
Protection level	IP67	IP67	IP67	IP67
Encoder	NO	YES	NO	YES
Lubrication	OIL	OIL	OIL	OIL
Operating temperature	-20°C /+50°C	-20°C /+50°C	-20°C /+50°C	-20°C /+50°C
Leaf max dimension	4 m	4 m	3 m	3 m
Weight	18.3 kg	20.4 kg	20.2 kg	20.2 kg
Items no. per pallet	32	32	32	32
DU.350CF weight	14.3 kg	14.3 kg	14.3 kg	14.3 kg
No. of foundation boxes per pallet	24	24	24	24