

# RISE®



Smart  
Moving



---

# CAESAR

---

AUTOMATIC ELECTROMECHANICAL BOLLARD 24 VDC

---



Made in Italy



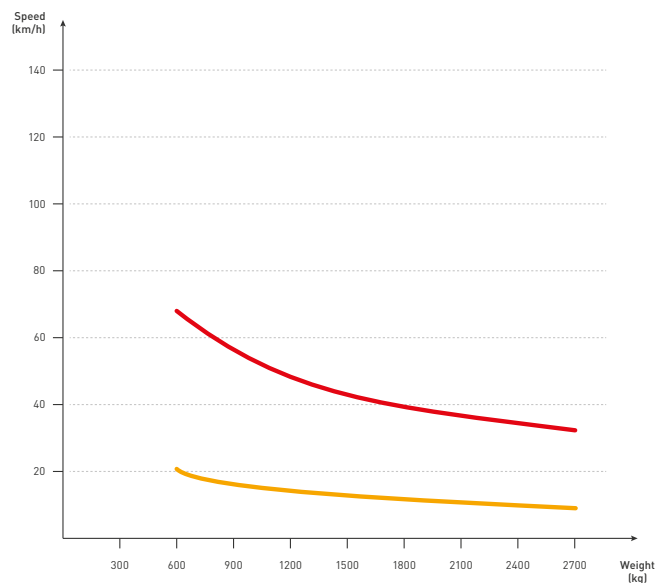
# CAESAR

Ø 200 mm | H 600-800 mm | Thickness 5 mm

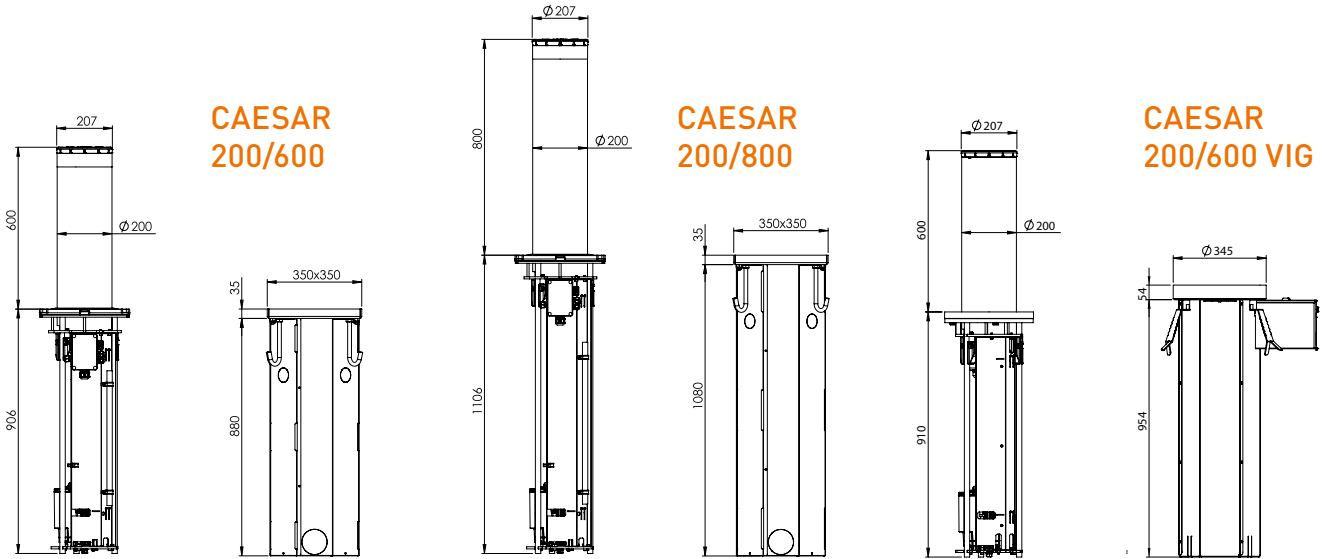


- Automatic electromechanical bollard 24 Vdc, height of 600 or 800 mm, with a cylinder thickness of 5 mm
- Cataphoresis treatment and “Graphite Black” quartz painting painting or a brushed stainless steel AISI316 tube
- Integrated LED lights on the cylinder and a control panel capable of managing two bollards simultaneously
- Foundation box compliant with EN124 standard (25T) for the passage of light vehicles
- CAESAR PLUS version equipped with patented custom key manual release for raising and lowering the bollard in the absence of power
- Locking mechanism in the raised position in case of power failure
- Accessories available: heater, buzzer, and battery kit
- Integrated obstacle detection system
- Adjustable speeds for raising, lowering, and slowing
- CAESAR VIG version, backward-compatible with foundation boxes of the VIGILANT 500 model

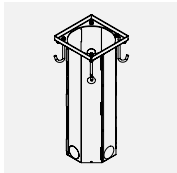
## CAESAR



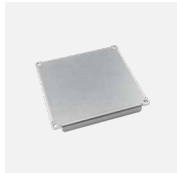
- Impact resistance: 10.000 J
- Breakout resistance: 110.000 J



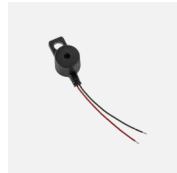
## ACCESSORIES:



**CA200/600 E**  
Foundation box for CAESAR 200 /600.



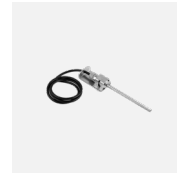
**EL.TOP200**  
Cover for foundation box CA200/600 E or CA200/800 E.



**GL.BUZZ**  
Buzzer. Requires CP.BL accessory.



**GL.CABLE10**  
Cable FG10 10x1.5 mmq.



**GL.HEAT**  
Heater for bollard, active below 5°C.



**P010**  
Drainage pump.

**CA200/800 E**  
Foundation box for CAESAR 200 /800.

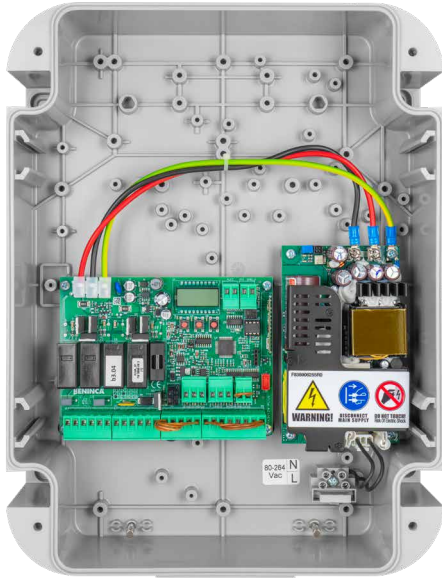
\* can be shipped separately

TECHNICAL DATA	200/600	200/800	200/600 I	200/800 I	200/600 PLUS	200/800 PLUS	200/600 I PLUS	200/800 I PLUS	200/600 VIG	200/600 I VIG
Code	934306691	934306693	934306692	934306694	934303143	934303144	934304122	934304123	934304145	934304153
Cylinder height	600 mm	800 mm	600 mm	800 mm	600 mm	800 mm	600 mm	800 mm	600 mm	
Cylinder diameter	200 mm									
Cylinder thickness	5 mm									
Cylinder material	Steel S235JR		AISI 316 stainless steel		Steel S235JR		AISI 316 stainless steel		Steel S235JR	AISI 316 stainless steel
Raising time with deceleration	6 s	8 s	6 s	8 s	6 s	8 s	6 s	8 s	6 s	
Lowering time with deceleration	5 s	7 s	5 s	7 s	5 s	7 s	5 s	7 s	5 s	
Power supply	230 Vac - 50/60 Hz (control panel with different voltages available on request)									
Power consumption	220 W									
Electromechanical actuator	24 Vdc									
Load index (EN124)	C250 (25 tonnes)									
Lowering cycle in case of power failure	Optional (battery kit)				Manual release				Optional (battery kit)	
Obstacle detection during raising	Integrated									
Daily cycles	500									
MCBF	1.000.000									
Impact resistance	10.000 J									
Breakout resistance	110.000 J									
Operating temperature	-40°C ÷ +60°C [GL.HEAT required for temperatures below -10°C]									
Protection level	IP67									
Actuator protection level	IP68									
Weight (without foundation box)	56 kg	65 kg	56 kg	65 kg	56 kg	65 kg	56 kg	65 kg	56 kg	65 kg

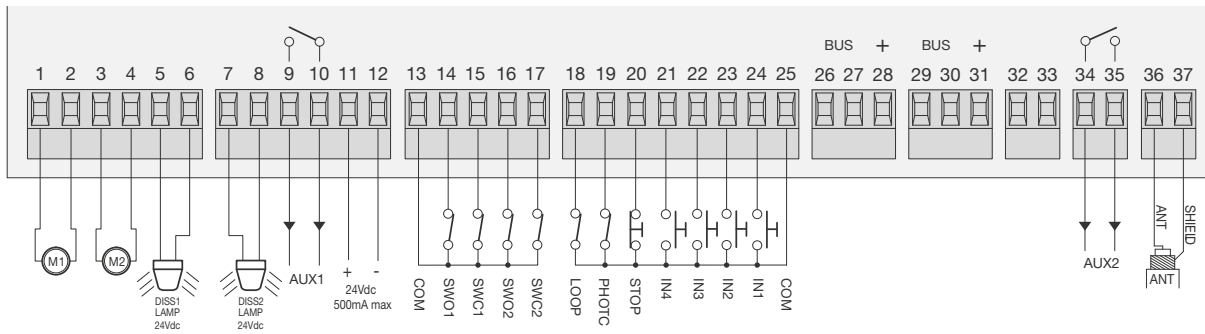


# ROMA.CP

Control panel for 2 electromechanical bollards



- Control panel for 2 electromechanical bollards 24 Vdc
- Integrated radio receiver 433.92 MHz, 64 codes, 3 encoding systems
- Bus system for synchronising multiple control units
- Removable terminal blocks
- Parameter and logic regulations via integrated LCD display
- Automatic, semi-automatic, and manual modes
- Adjustable raising/lowering speed of the bollard
- Integrated obstacle detection
- Dedicated input for alarm function in case of NC entry engaged
- Programming access password
- Equipped with step-by-step PP command inputs configurable and separate for each bollard, and centralized control inputs ALL UP and ALL DOWN
- Integrated LED management
- Separate limit switch inputs for each motor
- Inputs for loop control and safety devices
- 2 auxiliary outputs configurable in different ways
- Integrated traffic light management
- Protection rating IP54
- Number of cycles for scheduled maintenance



## DOMUS

Enclosure designed for urban areas, suitable for housing control units and command devices for bollards.



### CP.BL

24 Vdc traffic-light control unit, buzzer, and LED lights.



### LED.TL

2 light 230 Vac LED traffic light.



### TL2

2 light 24 Vdc LED traffic light.



### SIR2

Dual-tone sirens detector.



### DA.BT6

7 Ah 12 Vdc Battery.



### VE.KM1HN

Single-channel 24 Vac/dc detector for magnetic loop.



### CABLE.L6

Loop with 6 m connection cable, for VE.KM1HN.



### PROG

Time programmer.



### ROMA.CB

Battery charger for ROMA.CP.